

SIMAGIC 速摩

GT1 STEERING WHEEL USER MANUAL (VERSION V1.2)

1. About SIMAGIC	3
2. Product Introduction	
2.1 Overview	4-5
2.2 Before Use	6
2.3 Function Introduction	
A Ckey Mode Function	7
B Light Settings	8
C Knob Setting	9
2.4 Technical Introduction	10
3. Safety Instructions	11
4. Packing Brief	12
5. Quick Release	13
6. Upgrade Guide	14-16
7. Warranty Description	17
8. Disclaimer and Notice	18

GT1 Steering Wheel

Welcome to the Direct Drive Revolution.





Founded in July 2018 in Shenzhen, a young city of dreams, SIMAGIC Tech Co., Ltd has become a leading force nationwide in the sim-racing field, who provides high-end simulation devices to customers and overall solutions to the industry.

"Full dedication to promoting sim-racing culture" is SIMAGIC's cardinal principle and spirit. "Leading the trend of Sim-racing technology and innovation" is the goal of our branding. With that belief in mind, we devote ourselves to filling the vacancy in China's sim-racing industry. Our innovation and optimization of products never stop. WE are in the vanguard of sim-racing technology. It's our mission to build smart and advanced sim-racing equipment for car-racing game lovers, reproduce authentic racing experiences for players, and provide a brand new sim-driving application for the driving industry.

Jinquan Li, founder and CEO of SIMAGIC, graduated from Shenzhen University with a master's degree in Control Theory and Engineering. His commitment lies deep in the study of control system and driving mechanism. With his team, plus equipped with passion and professionalism, they have been through a 3-year journey of sweat and effort preparing for the best. After the rollout of its first commercial Direct Driving Wheelbase in August 2018, SIMAGIC made its name nationwide. Three years were rather short but long enough for SIMAGIC's innovation to go forward. M10 Base, GT Wheel Series, α Servo Base, Pedals, Sequential Shifter, and more, the SIMAGIC family is booming. Now, we have become the only sim-racing company that integrates R&D, production, and marketing, and revolutionized driving simulation systems with overall upgrades in customization and development.

In the future, SIMAGIC's spirit of "be guided by technology, be led by intelligence" will go even further. We'll actively pursue product development through science and technology, explore the infinity of the best user experience, and develop a new sim-racing culture based on "China's intelligent manufacturing."

2.1 Overview

- * The main body is made of high-strength aviation aluminum alloy by high-precision CNC machining.
- * The surface has been sandblasted, oxidized and other processing procedures to improve the appearance touch texture, elegant black cold color shows the cold temperament;
- * The unique hub appearance design, the YaHei metal texture panel and the self-designed racing flag integrate the track "s" logo, as well as the simagic initial logo horn cover decoration, giving a stronger racing element sense;
- * Simagic independently designs magnetic light sensitive shift paddle, which has a very high real car simulation feel.
- *The outer layer of steering wheel is wrapped in comfortable fur

ROUND WHEEL



D WHEEL



Direct drive simulator GT1 steering wheel independently designed magnetic optical shift paddle,It has a very high real car simulation feel.

Round Wheel



Positive Plane



Back Facing

D Wheel



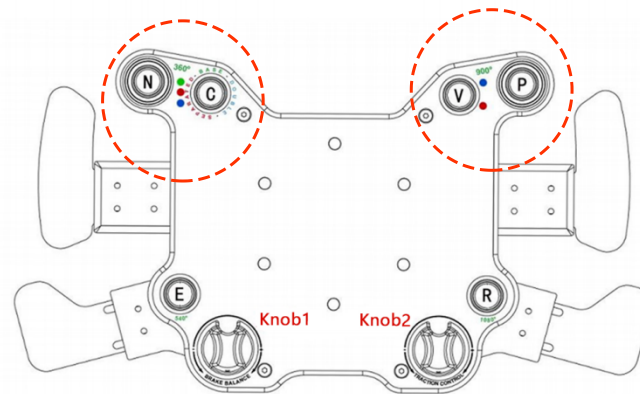
Positive Plane



Back Facing

2.2 Before Use

- ① Before calibration, set the C key shift switch to **C green** (parameter setting calibration working mode)
- ② Long pull the V key lever down (do not release), while long dial, turn the dial ABCD in sequence once, repeatedly twice, release the V key.
- ③ After completing the above operation, turn **C green** back to **C Red** (double clutch mode) or **C blue** (double axis mode).
- ④ Complete the calibration.



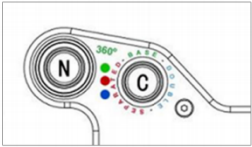
* If the 13 and 14 keys on the calibration page of the control program will jump after calibration, the calibration will be conducted again.

*The color is for illustration only

2.3 Function Introduction

a.C KEY MODE FUNCTION :

the C toggle switch is a three position lock switch, from top to bottom, green, red and blue; Represent different working modes of hub.



- ① Toggle switch at **C green (top)**: parameter setting calibration working mode.



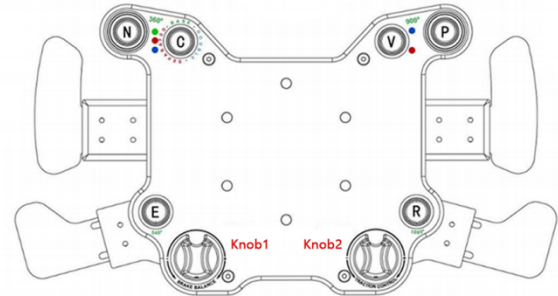
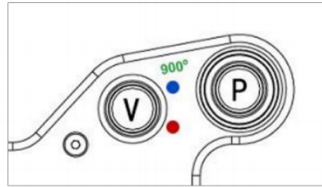
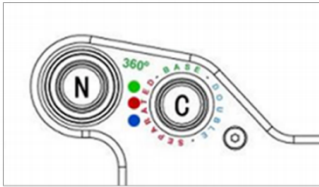
Button for wheel rotation quick settings

- N: Set the steering wheel rotation angle to 360 °
- E: Set the steering wheel rotation angle to 540 °
- P: Set the steering wheel rotation angle to 900 °
- R: Set the steering wheel rotation angle to 1080 °

- ② Toggle switch to **C Red (middle)**: double clutch mode (only for Four paddle version, ABCD) The clutch paddle is in working and semi clutch mode, and the linear clutch paddle on either side is in semi clutch state, Pull the linear clutch paddle on the other side to the full clutch state. Other cases and knobs can be reflected into the game.
- ③ Toggle switch to **C blue (bottom)**: dual axis mode (only for Four paddle version, ABCD) The linear clutch paddles on both sides can work independently. Two linear clutch paddles can be mapped into two input axis for separate use, and other buttons and knobs can be mapped into the game. *Double paddle AB models do not have clutch mode. Only gear shift.

b.LIGHT SETTINGS :

the self center toggle switch is divided into upper and lower position for adjustment.

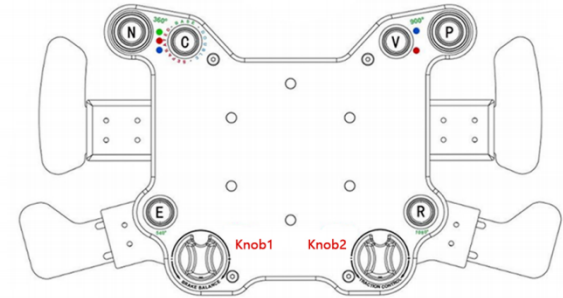
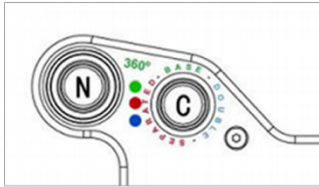


- ① Before adjusting the light, adjust the toggle switch of C key to **C green** (parameter setting calibration working mode)
- ② Light adjustment: flip the V key toggle switch upward to **V blue** to cycle through 4 different light modes

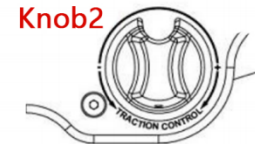
Light mode: always on, fast flash, slow flash, light off

- ③ After completing the above operations, turn **C green** back to **C Red** (dual clutch mode) or **C blue** (dual axis mode).

c.KNOD SETTING :



- ① Before light adjustment and calibration, the Toggle switch C must be set to **C green** (parameter setting calibration working mode)
- ② The mechanical damping can be adjusted by turning **knob 1** (Left knob), with each notch change by 10%T
- ③ **Knob 2** (right knob) can be rotated to adjust the force feedback size, with each notch change by 10%.
- ④ Pull desired single side clutch paddle (C or D) , press and rotate knob 2 to adjust the size of half clutch, with 1 / 32 change per cell



2.4 Technical Introduction



New integrated design panel integrated featuring four LED buttons with switchable light modes, two CNC aluminum knob and three position toggle switch mode that enable quick adjustments.



True Quick Release steering wheel without requiring any tools. Fast yet secure using automotive grade QR system.



True Wireless transmission. It is the first in the industry to build multiple wireless modules for data transmission, eliminating the complex integration of multiple connecting lines.



Instant real time mapping. The optical sensing module can quickly and accurately map the paddle shifting parameters of each moment to the control software parameter page while driving.



Equipped with self-developed control software, Race Manager has feature rich yet simple and user friendly functions that adjust data according to different personal needs.



The program can be updated online and more functions of hub can be developed continuously.

Safe Operation

- * **Power-on instruction: before turning on the power, make sure that the power cord is connected to the wheelbase. Only unplug the power cord when the wheelbase is switched off.**
- * It is strictly forbidden to expose the device and its power supply to rain or humidity in order to avoid short circuit and electric shock that may cause device malfunction and fire.
- * Desired temperature of operation is 15°C-35°C.
- * The recommended operation time of the wheel with continuous force feedback activity is 1 hour. Excessive use may cause health risks. We suggest taking a 5-minute break every 20 minutes. Do not drive for more than 2 hours a day.
- * Although this product has force feedback configuration, children under 13 years old must be under parental supervision to complete the configuration. Parental guidance is required to monitor children's use of the device.
- * This product contains small pieces and is not suitable for children under 13 years old to use alone.
- * When you use it for the first time, please adjust the force feedback from minimum to a level you are accustomed to.
- * In the game, if the Force Feedback previously set is beyond your control, please stop the game immediately and adjust the force feedback parameters.
- * The wheelbase contains components that cannot be repaired by the user. Opening the casing is forbidden and may cause harm to people or property.
- * Do not open the casing of the device, as it will void the warranty.

Electrical Safety

- * Use only the power supply and power cord that came with your wheelbase, which is important to protect your safety, rights, and interests.
- * Do not use a non-standard power supply and power cord.
- * To ensure safety, replacements may only be issued from an authorized repair center.
- * Do not use non-standard power sources, even if the voltage and frequency appear acceptable.
- * To avoid product damage, use only AC power with a standard wall socket.
- * Do not expose your wheelbase to sources of heat.
- * Unplug the power cord of your wheelbase when unused for long periods of time.
- * If the wheelbase is found to have any malfunctions, stop using it immediately and contact SIMAGIC Official or authorized center for help.
- * Please subscribe to SIMAGIC official website and social platforms for any update regarding product information.

 *** This product is only limited to simulation driving related activities. Please distinguish simulation games from reality and drive safely!**

4.1 Package Contents



1.5m USB data cable
Delivered to users with
package for hub upgrade
or standby



Warranty card
As an important evidence
of after-sales service,
please keep it properly



**3mm Allen wrench: replace
disc body**



① Retract the red shell of the quick release toward the steering wheel (retract the shell when removing the quick release)

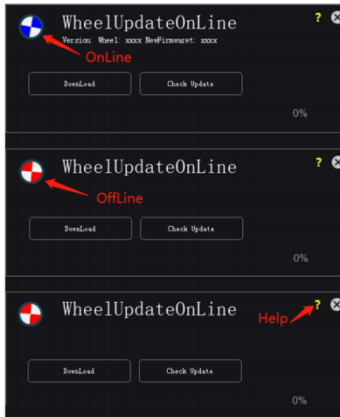


② After aligning the holes of the base, insert the steering wheel into the base



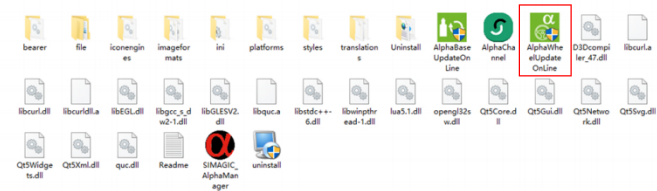
③ If the quick release cannot be locked, it may be because the holes are not aligned. Rotate the steering wheel or remove it and insert it again.

Note: SIMAGIC's customized quick release adopts a high-precision design with six beads on the top and four beads on the bottom. The steel ball holes must be aligned with the base to access the base.



- Steering wheel upgrade, please protect Keep computer networking status.

- Go to the Race Manager folder, Open the base upgrade program and prepare to upgrade



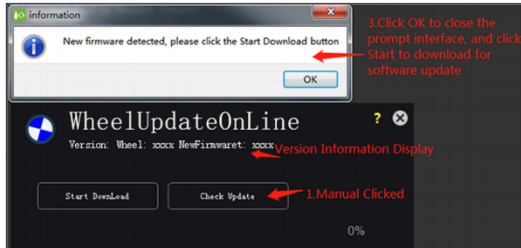
- Check the version status. Simagic products will always be up to date When you get them. If it's a new version Please pay attention to the official channel.

Note:

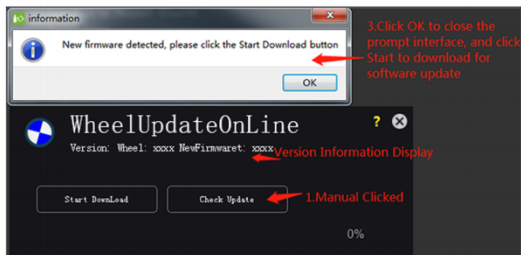
Do not do any operation during the upgrade. After the upgrade is successful Restart the base to complete the version upgrade, and it can be used normally.

Update (step 1) :

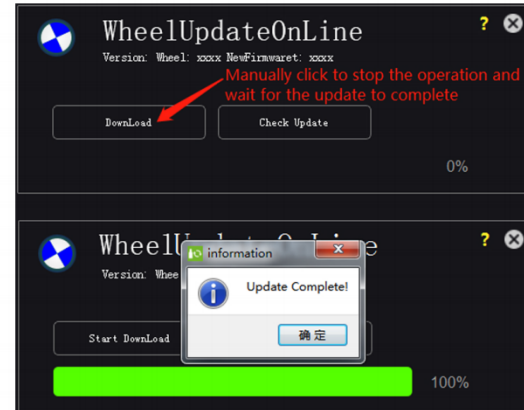
- (1) USB cable to connect
- (2) Wheel on the electricity
- (3) Wait for the self-test to complete
- (4) Open the WheelUpdateOnLine software
- (5) Power on self-detection



(6) Manual testing

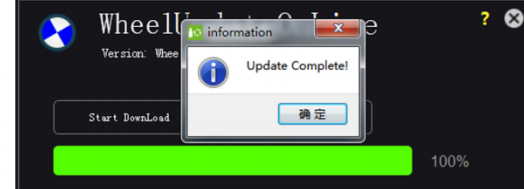


(7) Download operation



(8) Exit the software

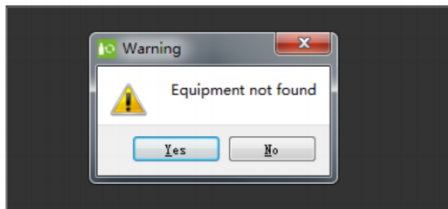
(9) Restart the Wheel



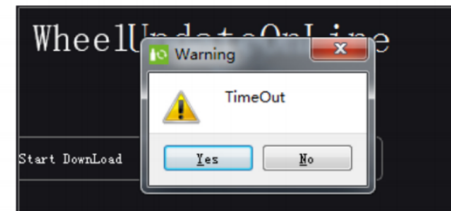
Prompt processing :

- (1) Exit the software
- (2) Restart the Wheel
- (3) Go back to step 1

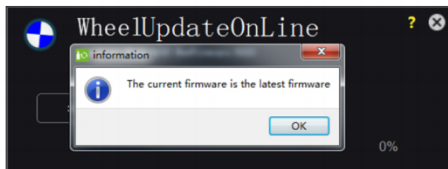
01- *quipment not found:*



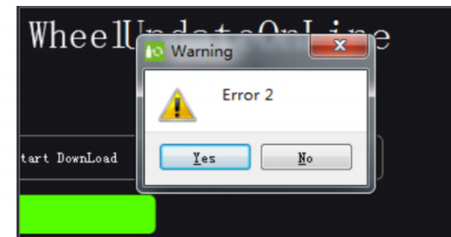
03-*The current firmware is the latest firmware:*



02-*Time Out:*



04-*Error 1-Error 5:*



The SIMAGIC team, guided by the responsibility of reassuring customers, devote ourselves to the manufacturing industry with a humble spirit of the service industry. We strive to build a sim-racing ecosystem with the best user experience.

To protect the rights and interests of consumers, SIMAGIC provides you with a 12-Month Warranty service.

To request a warranty service order, please contact SIMAGIC service team or an authorized SIMAGIC service provider.

To obtain warranty service, you must fill out the warranty card and deliver it with the product to the SIMAGIC After-sale Service Center.

* SIMAGIC's 12-month warranty policy allows you to replace or repair your purchased SIMAGIC items counting from the date of receipt of shipment. If you cannot provide the receipt, the warranty period counts from the manufacture date.

The warranty does not cover any Damage caused by abuse, misuse, or modifications; or Damage caused by any improper operation performed by anyone who is not a SIMAGIC representative.

For more information on after-sale or warranty service, please check out our Terms and Conditions at [SIMAGIC.COM](https://www.simagic.com) or contact us @simagicofficial via social media platforms like YouTube and Facebook.

- * This product has strong force feedback strength and contains small parts. Children are forbidden to use the device without parental guidance.
 - * Please turn off the button and power supply to prevent accidents.
 - * Anyone trying to use your device for the first time must be instructed and monitored by you the owner.
 - * Loose clothing and easily tangled objects such as hair, cables, and skirts should be kept away from the device.
 - * Your SIMAGIC DDW is ready to use after being unboxed. We make sure the firmware is updated to the latest version when it leaves the factory. For more information regarding software update, please refer to the SIMAGIC website and follow us on Twitter, Facebook, and Instagram @Simagicofficial.
 - * Users MUST wait for 1 hour before driving a car if they had been using the device.
 - * This instruction manual is for demonstration purposes only, not for marketing purposes. It is a general instruction of a single product (including the relevant series products). Please refer to the actual item for your purchase.
 - * The product images and contents shown above are for demonstration purposes only. The actual products may vary slightly in terms of the external design (including but not limited to appearance, colors, and sizes) and the content display (including but not limited to backgrounds, UIs, and pictures). Please check the actual products for reference.
 - * The test data above are all sampled from the SIMAGIC test laboratory and may not reflect the actual performance due to conditions of use and environmental factors. Please refer to the actual user experience for performance evaluation.
 - * The above contents, such as descriptions and images, are subject to changes. SIMAGIC may adjust relevant contents to provide more accurate product information, specification, and feature description at any time based on the actual products in terms of performance, specification, index, and other information. Sometimes, the product supply may fluctuate due to unforeseen problems happening in the process of batching or delivery. In that case, SIMAGIC may change relevant descriptions and images as needed without notification. Please refer to official channels for the latest information.
- * **Note: Documents like product manuals are written based on SIMAGIC products as supplements. Please download the relevant documents at approved channels for the security of users' legitimate interest.**

Thank you for reading and have a good time



Official website: www.simagic.com
International media platform: SIMAGIC official

This manual is updated without notice.

The latest manual and any SIMAGIC related information can be found on the official website .
If you have any questions and/or suggestions about this instruction manual or SIMAGIC products,
please contact us through the information channel.